

PHHS PFA THURSDAY NEWS

February 3, 2011

ATTENTION: Families of PHHS Students

APRIL in PARIS

FASHION SHOW 2011

Any Donations ...Any Connections?

You have them... We NEED them!



REGIFTING – The holidays are over. Did you receive gifts you cannot use or didn't need? We'd love to have them to raffle off.

TRAVEL – Do you, or someone you know, have a timeshare to SHARE? Are you a part of or know anyone in the Travel Industry that can donate travel, hotel, excursions?



FOOD – Connections with restaurants, catering, or a business in the food industry? Looking for donations of services or goods.

PROFESSIONAL SERVICES – Landscapers, Plumbers, Electricians, Contractors... Masseuses, Cosmeticians, Beauticians...Dentists, Doctors, Designers. A donation toward your services makes a great prize.



SPORTS and THEATER – Season Ticket Holders – Can you spare a set of tickets to an event after April 30, 2011? If you don't have the tickets on hand, we will design a voucher for the event.

AD JOURNAL - Do you know someone that would like to give but doesn't have items for the raffle portion? Our ad journal is a great tool for advertising their business. It is also a great venue to place coupons for their business.



Acknowledgement for your donation will be included in the Fashion Journal.

PHHS PFA is a 501c3 organization. FID# 23-7067427

Your donations are tax deductible.

Please contact Lisa Friedman 201-391-2004 poochie@optonline.net
or Amy Spellman 201-476-0222 spellmom81@yahoo.com

COME JOIN US FOR THE NEXT PFA Meeting February 7, 2011

The next PFA meeting will be held on Feb 7th at 9 AM in the second floor conference room. Assistant Principal Glenn deMarrais will be the guest speaker and will be discussing student scheduling.

Agenda for February 3rd:

President's Report – Lisa Johnson

Principal's Report - Ms. Van Gunten

Teacher Representative – Frank Cherichello

Guest Speaker – Glenn deMarrais

Student SGA Liaison – Stephanie Wang

Administration Secretary – Faye Kovner

Recording Secretary - Christine Bianco

Treasurer's Report – Randy Margulies

Board of Education Liaison – Mark Kastan

PFA/Coalition Liaison – Donna Sirlin

PTO Liaison – Montvale Schools – Sarah DeLange

PFA Liaison – Woodcliff Lake Schools – Eileen Janowsky

New Business, Old Business, Things to discuss

Committee Reports:

Scholarship

Fashion Show

Safe Graduation

Reminders:

Next Board of Education Meeting February 7th 7:30 PM

Next PFA meeting March 28th 9:30am

Recycle your used cell phones and ink cartridges by:

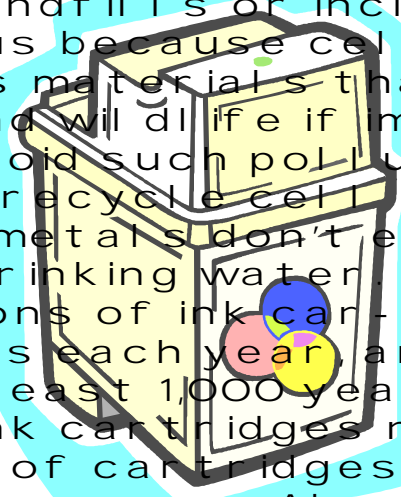
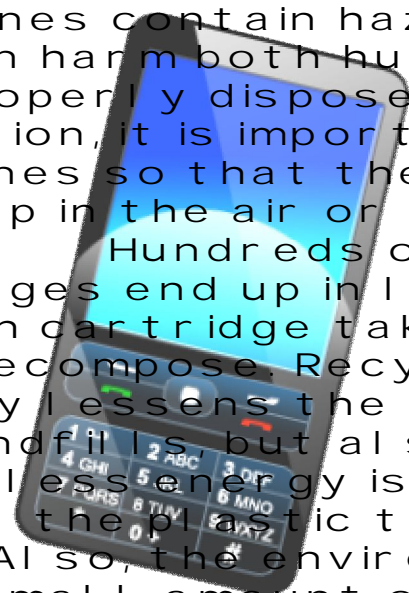
- bringing them to Mr Shields in Room 153
or
- giving them to an environmental club member
or
- (parents) leaving them in the main office for Mr Shields to pick up

Why Recycle Cell Phones and Ink Cartridges?

When cell phones are thrown in the garbage they end up in landfills or incinerators. This is dangerous because cell phones contain hazardous materials that can harm both humans and wildlife if improperly disposed. To avoid such pollution, it is important to recycle cell phones so that the toxic metals don't end up in the air or in our drinking water.

Hundreds of millions of ink cartridges end up in landfills each year, and each cartridge takes at least 1,000 years to decompose. Recycling ink cartridges not only lessens the number of cartridges in landfills but also saves energy. About 80% less energy is used to remanufacture the plastic than produce it new.

Also, the environmental club receives a small amount of money for each cell phone or ink cartridge we send to the recycling company. These funds help to sup-



**HILLS/VALLEY COALITION AGENDA
MONDAY, FEBRUARY 7, 2011
MONTVALE MUNICIPAL BUILDING**

I. REPORT & STATUS

CO-CHAIR TRANSITION

Welcoming Donna Sirlin as new Co-facilitator of the Coalition
Thanking Janice for her years of service, will still be an active participant

BUDGET/ FINANCIAL STATUS- MUNICIPAL MONEY -Janice
Hills/Valley Coalition Account Status \$ 8852.18 balance
Corporate Fundraising – update from Jane

II. HILLS/VALLEY PARENT COMMUNITY PROGRAM

A. Spring Parent program May 10, 2011 - PVHS

Topic " The Silent Epidemic": Teen Depression
Keynote Speaker: Jordan Burnham from www.activeminds.org
and the "Ganley Foundation" – mother, Anne Ganley and Grace Carricarte (professional educator)

B. Publicity Plans for Program: Signs, Posters, Flyers, Bulletin Boards and newspaper articles

Kim's flyer & Lawn Design (hard copy for all to see)
Lawn Signs- Ordering & Dispersement– Who volunteers?
Posters- Ordering and Dispersement -Who volunteers?
Invitation Letter- Janice needs to develop and send with flyer to 12 neighboring towns (Police & Superintendents)
Bulletin Boards in town (Sean-Hillsdale, Alison-Montvale, Mike-WCL, Joanne-RV)
Newspaper Publicity – Shelley Tobin given brief article with program info- Who volunteers to write and give to Shelly? Jane?

IV. COMMITTEE CHAIR REPORTS

A. Newsletter

Spring Newsletter theme- Teen Depression/Suicide "The Silent Epidemic"
Need other suggestions for articles? Lia and others start collecting articles
Do we want a parent or student's perspective about stress, anxiety and/or depression?
Mail out – week of April 8th
Need volunteers for mail out, please sign up (Jane passes sign up sheet)

B. SAFE Homes-Gale/Jane

✦ Safe Homes directory is available on our website
Discuss safe homes community ideas (Donna S. & Sharon G.)

C. Web Site Update: Elliot

Status of articles to be uploaded on website
Need to recruit college student to assist with website maintenance

V. POLICE AND SCHOOL UPDATE

✦ Current activities & statistics



JEANS FOR TEENS

Between Jan. 17 and Feb. 10, we are participating in *Jeans for Teens*. This is a program run by *Aeropostale Clothing Stores*. For each pair of lightly used jeans that are donated, students will receive a 25% off coupon. *Aeropostale* will donate the jeans to homeless shelters and charities. We will be collecting them in the school lobby, library and various classrooms and will deliver them to the Paramus Park Store on Friday, Feb. 11.

So go through your closets and donate your old jeans (any size). We will take the names and addresses of any donors and send them the coupon when we get them.

Thanks for your help with this worthy project.

Peggy White
Library Media Specialist
Interact Advisor

Pascack Hills High School Library
Montvale, NJ 07645
201-358-7020 ext. 2030
Fax 201-358-7019

Mr. Hills Contest on it's way!!!!

The Mr. Pascack Hills contest is scheduled for March 17th, which is a Thursday night. The format is similar to the traditional beauty pageant, but for guys, and it will be entirely 'tongue in cheek'. There will be a male faculty contest and a male student contest and there will be a panel of judges made up of female faculty and students.

The pageant will have 5 categories: athleticism, PH trivia, 'show us your talent', 'life philosophy' and of course, our favorite, "Who looks the freshest?" We are also planning to put together video bios of each contestant (American Idol Style).

Tickets will be \$5 in advance and \$8 at the door and will benefit the PH golf and tennis teams, which a portion going to the Footprints in the Sand foundation. They can be purchased here at school starting after midterms.

Parent Faculty Association

**Pascack Hills High School
225 West Grand Avenue
Montvale, New Jersey 07645**

February 2011

Dear Parents of Pascack Hills High School:

On behalf of the class of 2011, we are contacting you about an opportunity to support current seniors through the **Pascack Hills High School Scholarship Fund**. Your support will allow us to give financial awards to deserving seniors, to be used toward their college expenses.

Pascack Hills High School will be honoring select students from this year's senior class at an awards ceremony on Thursday, June 9, 2011. As part of this event, the PFA will recognize students for community service, school service, outstanding participation in extra curricular activities, as well as other accomplishments, talents and interests. We will also present eligible students with financial aid scholarships prior to that evening.

Our Annual Fund Drive is currently underway to raise money for these deserving seniors. We hope that we can count on the support of the families of our Hills students.

Please find a donation form that you can print out, on the next page. Donations to the PFA Scholarship Fund are **tax deductible**. Your support at any level would help the continued success of this important program. As a contributor, your name will be listed in the Awards Program given out that evening. A check made payable to the **PFA of Pascack Hills Scholarship Fund**, would be appreciated **prior to April 8, 2011**. With your assistance and support, we will continue to recognize our students for their outstanding accomplishments.

If you have any questions, please feel free to contact us through Mrs. Roseann Heytink in the Pascack Hills Office at 201 358-7020, ext. 2002 or email us at PHHSA-wards2011@gmail.com.

Thank you for your support!

Sincerely,

Debbie Rubenstein and Suzanne Nathin

PFA Student Recognition Awards Chairpersons

Donation Form for PFA Scholarships & Awards

All donations will be used for financial need, community service, and leadership awards.

The PFA of Pascack Hills High School will be honoring select students from this year's senior class at the awards ceremony on June 9, 2011. We are raising funds to recognize our students in the areas of leadership, community service and financial need. Most importantly, these PFA scholarships will help enable students to further their education by providing financial assistance. **The recipients will be chosen by a school-based committee consisting of administrators, guidance counselors and faculty. THERE ARE NO PARENTS INVOLVED IN THE SELECTION PROCESS.**

Please indicate the monetary amount of your donation

Amount \$ _____

Contributions of \$500 or more can be individually awarded at the Senior Awards Ceremony on June 9, 2011. Please list award criteria that will enable the selection committee to choose the recipient. If you wish to personally present this award, please check the box below.

____ Yes, I wish to present this award. ____ No, I do not want to present the award.

Criteria for \$500 or more Scholarship _____

Your donation will be listed in the Awards Program. How would you like the entry to appear? (Example: The Jones Family, The Jones Corporation)

Please complete:

NAME (or contact person) _____

ADDRESS _____

COMPANY NAME _____

PHONE # _____

Please make all checks payable to the PFA of Pascack Hills Scholarship Fund.

Mail all donations to:

Pascack Hills High School, 225 West Grand Avenue, Montvale, NJ. 07645, Attn: PFA Scholarship

You will receive confirmation of your donation from the PFA Scholarship Committee

THANK YOU FOR YOUR SUPPORT!

If you have any questions, please feel free to contact

Debra Rubenstein and Suzanne Nathin

at PHHS Awards2011@gmail.com

PFA Student Scholarship Chairpersons

Contributions to the PFA Pascack Hills Scholarship Fund are tax deductible.

Good News! Spirit wear is now on sale!

Sweatshirt #1: Hooded black and orange sweatshirt with "Cowboys" written across the chest, pocket with zipper compartment on top of it, zipper by the neck. Price: \$37.00



Sweatshirt #2: Hooded white and grey sweatshirt with college letters ("PH") on back, zipper on top of pocket. Price \$37.00



Tie-Dye T-Shirt: Orange tie-dye with school name and logo on front.
Price: \$15.00



**Buy Both
Sweatshirts and
pay only \$70**

Please print and fill out form. Submit to Ms. Sachs, room 126, or Ms. Kaser, room 124, with payment. Make checks payable to Pascack Hills General Fund.

Name: _____

Black Sweatshirt size: _____

T-Shirt size: _____

White Sweatshirt size: _____

-- **WCLEF** --

“bringing together our community”

“I ♥ WCL” **BINGO** NIGHT

Friday, Feb. 11th ~ 6:30 – 9 PM

Woodcliff Middle School GYM

BINGO

Prizes & Class Basket Raffles

Desserts, Coffee & Water (4 sale @ \$1 each)

ALL are welcome @ **BINGO** night

FREE arts ‘n’ crafts & facepainting

Come out & support WCL Schools

RSVP by Thursday, Feb 9th * limited to 200 players

Questions? email: FAC6@mac.com or call: 201.505.9455

-----Tear here-----

Family Name: _____ Phone #: _____

Admittance Fee: \$5:00 per guest (Includes one **BINGO** card per guest)

Of guests: _____ x \$5:00 = \$ _____

Additional bingo cards will be available for \$1:00 each

Please return completed form, along with your check payable to:

WCLEF – C/O Kerry Madden, 7 Cricket Lane, WCL 07677

NO later than Feb 9